

Protea Eco Adventures



Conservation Through Utilization

Protea Safari Tours for 2012

It's hard to slow down and break away - be captivated by the majestic and contrasting beauty of the great African outdoors to which we will introduce you! Become an intrepid explorer with our safari tours (expeditions), we will take you to places where time stands still and your spirit is inspired to soar to greater heights.

At Protea Safari Tours we believe that in the world's wilderness areas lie the preservation of humankind. We want to make a difference in the lives of our guests, by enabling them to find new paths, and leaving a legacy of conservation for our children. Our passion and drive for the great African outdoors is to share Africa's wildlife reserves in a manner that leaves little imprint on the environment whilst delivering a unique experience for you to enjoy.

Our guided safari fees priced are per person sharing, all our safari tours are self-drive, self-catering but it includes all your camping costs and Park fees. We guarantee confirmed reservation at all the reserves and camp sites. These safari tours are aimed at true nature lovers and those that enjoy the unspoilt wilderness. These tours are not designed as obstacle courses nor are they an endurance test. All our safari tours are family-orientated and the aim is to enjoy the wonders of these pristine wilderness areas and to experience the original safari atmosphere of an unhurried life-changing journey.

Namib Desert Safari, Namibia

Southern Desert Safari: 21 – 29 April 2012 (8 days) @ R8 500 per person sharing
Coastal Desert Safari: 2 – 12 May 2012 (10 days) @ R10 650 per person sharing

Only 10 couples can be accommodated on any one of these safaris

Namibia is a land with extremes, an extraordinary country with wide horizons, contrasting landscapes, an abundance of wildlife and a population that is among the lowest in the world. It's a country that has so much to offer explorers, and its home to some of the best gravel roads in Africa. That's why we will be travelling mostly on gravel roads for this safari to discover some of the most amazing wildlife scenes that this vast desert has to offer.

Southern Desert Safari, Namibia

The route will take us to the magnificent Augrabies Falls for a one night stay. Once you've set up camp, sitting back and enjoying a sundowner is an absolute must. Crossing over into Namibia via Onseepkans, we head to Norotshama for an unbelievable wine farm experience on the banks of the mighty Orange River. The chalets at Norotshama overlook the river. The picturesque German town of Luderitz will be our base for three nights. But en route we will be going thru the Ai-Ais-Richtersveld Transfrontier Park; you will feel as if no one else has ever been there before. The gravel road winds along the edge of the river, where masses of water are framed by towering black mountains and a heaven for 4x4 enthusiasts.

At Lüderitz we will undertake a full day's expedition into the Sperrgebiet National Park with a local guide - it's time to test/learn your sand driving skills. The "ghost town" of Kolmanskop is next on the list, not to mention the local

13 September 2011

oysters and the spectacular old German buildings dating back to 1906. The coastline around Luderitz has a strangely post-apocalyptic appeal to it. From Luderitz we start looking for the famous Wild Horses of Namibia.

Our next night will be spent at a guest farm en route to Sesriem campsite, but not before visiting the intriguing German built Duwisib Castle and then we head to the renowned Sossusvlei for a two night camping experience. This area boasts some of the world's highest sand dunes and is a photographer's delight. Climb "Big Daddy" or "Dune 45" and then take the long sandy hiking trail to "Deadvlei" to experience the magic changing colours of the dunes.

These dunes tower to almost unimaginable heights, and despite the howling desert wind, the angle of the dunes will never exceed 32 degrees. You can sit on these dunes for hours and just take in the infinite beauty and isolation of the desert or charge down a dune for a pulse-racing experience. A visit to the Sesriem canyon will round off your trip to the southern part of the Namib. The Southern Desert Safari ends here at Sesriem. If Namibia doesn't get your heart pumping nothing will. Come with us and experience what others talk about.

The tracks on this safari require a 4x4 vehicle with low range. You are more than welcome to tow your off-road caravan or trailer on this safari of a lifetime. A 4x2 or Soft-roader will also be capable of doing most of these parts but not everything.

The tour fee includes the Park fee, Guide fee for the Speregebiet 4x4 trip, all accommodation fees, camping fees, chalet fees and where applicable, breakfast and dinner.



Coastal Desert Safari, Namibia

This part of the coastal safari will start at the Sesriem campsite with a two night stay. This area boasts some of the world's highest sand dunes and is a photographer's delight. Climb "Big Daddy" or "Dune 45" and then take the long sandy hiking trail to "Deadvlei" to experience the magic changing colours of the dunes. These dunes tower to almost unimaginable heights, and despite the howling desert wind, the angle of the dunes will never exceed 32 degrees. You can sit on these dunes for hours and just take in the infinite beauty and isolation of the desert or charge down a dune for a pulse-racing experience. A visit to the Sesriem canyon will round off your visit to the world's highest dunes. En route to Swakopmund we will visit the best Apple Pie bakery in the Namib-desert at Solitaire. After conquering the Spreetshoogte Pass we will stay at the Namibgrens Guest Farm. Prepare yourself for the most amazing landscapes, Vogelfederberg, Kuiseb River, Kuiseb Pass, Zebra Pan and the Kuiseb Canyon before we get to Swakopmund. We will spend the night in the open desert.

During our 6 night stay in Swakopmund, the adventure capital of Namibia. We will be doing a Sea Safari at Walvis Bay. Experience Dolphins leaping out of the water; touch a seal on the boat, sea birds soaring above while you enjoy fresh Namibian oysters with cold sparkling wine. The Living Desert Tour will introduce you to all the strange Flora and Fauna that survive here. Then a 4x4 experience of note to Sandwiches Harbour, we will also explore the

13 September 2011

Spitzkoppe mountains with its dramatic bushman drawings, Brandberg, Henties Bay, Cape Cross with close to 500 000 resident seals, the Welwitschia's plants and the Moon Landscape. For the more adventurous; Quad Biking, an extra activity to name just one.

You will be fascinated with all the German buildings, night life, restaurants, the shops and the people of Swakopmund were our Coastal Desert Safari will end. If Namibia doesn't get your heart pumping nothing will. Come with us and experience what others talk about.

The tracks on this safari require a 4x4 vehicle with low range. You are more than welcome to tow your off-road caravan or trailer on this safari of a lifetime. A 4x2 or Soft-roader will also be capable of doing most of these parts but not everything.

The safari fee includes all camping fees and entry fees as well as the fee for the Sea Safari, Living Desert tour and Sandwich Harbour 4x4 trip.



Zebra Safari, Botswana

15 – 23 August 2012 (9 days)

Only 16 people can be accommodated @ R9 585 per person sharing

The Makgadikgadi pans used to be the greatest inland lake in the world – the size of Switzerland with a depth of 200 meters! Today the pans fill up to just a few centimetres but dries up totally in autumn, offering us some of the most dramatic wildlife experiences that Africa has to offer. During the dry winter months the pan fills up with thousands of Zebras, followed by Wildebeest, Gazelle and various predators. During the winter of 2010 close to 20 000 Zebra moved into this area.

These animals form part of the second largest migration of Zebra in Africa. It's during the dry season that the Zebra's must come down to drink at the waterholes and are followed by predators looking for an easy kill. If you are ready for an adventure of a lifetime, pack your 4x4 and let's head north/west into Botswana.

Our first camping night will be at the popular Khama Rhino Sanctuary with a large population of White and Black Rhino. From Khama we head into the Makgadikgadi Pans to the mysterious Kubu Island with its thousand-year old Baobab trees. Our campsite is under one of these ancient giants. Watching the sunset and sunrise over the pans is just one of those things you cannot explain to somebody, you need to experience it to understand it. This must be one of the best places in Southern Africa to view the stars.

13 September 2011

The next five camping nights will be on the banks of the Boteti River that has again started flowing after 26 years of drought. Using this as our base camp we will be visiting the world famous Baines Baobab's and the Nxai National Park whilst following the migrating herds of Zebra, Blue Wildebeest and predators in the area. Each day will be offering a new discovery.

Our last overnight point will be the Rhino mecca where our safari ends. After breakfast we need to head back to the reality of Gauteng via the Martin's Drift border post to Lephalale.

This camping safari is suitable for all 4x4, 4x2 and soft-roader vehicles with off-road trailers and caravans. Keep in mind that certain areas will not be accessible in 4x2 and soft-roader vehicles.



Big 5 Safari, Botswana

22 - 30 September 2012 (9 days) @ R9 600 per person sharing

The Big 5 Safari will take you on a real African safari experience into one of the last true wilderness areas in the world - The Okavango Delta.

Listed on www.100places.com as a phenomenon that is at risk of disappearing in the near future, this labyrinth of lagoons, lakes and hidden channels covering an area of over 15 000 square kilometres is the largest inland delta in the world.

This safari starts off at the only breeding sanctuary for Rhinos in Botswana. Travelling along the dusty salt pans of Botswana, we visit the mysterious Kubu Island with its thousand year-old Baobab trees and the ruins that resembles the Zimbabwe Ruins.

Travelling across the largest inland lake the world has ever seen, we end up at an oasis on the border of the pans. Built in typical African style, this village will be a welcome stopover after a long dusty day.

The next part of our adventure takes us up to Maun, the tourism mecca of Botswana where we will do a late afternoon flight over the Okavango Delta before we move on to the Moremi Game Reserve for a four night stay. The area is well known for its abundance of animal- and birdlife that flock to the area in the dry winter months.

Camping in these open areas will get you up and close with the animals that inhabit the Okavango Delta.

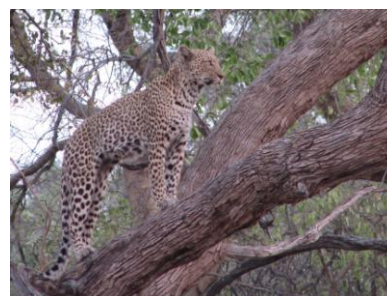
13 September 2011

A full day boat cruise will introduce you to a side of the Delta that very few people have seen. This will allow you to get really close to Fish Eagles, Marabou Storks and Pelicans as well as a host of wildlife. The Raptors found in this area will be a treat for bird-lovers.

The area is known for its herds of Buffalo, Elephant and predators looking for an easy meal. All the tracks on this safari require a 4x4 vehicle with low range. You are more than welcome to tow your off-road caravan or trailer on this safari of a lifetime.

The safari ends at Maun, should you wish to continue and join us on our Caprivi Safari. This will be our starting point.

The safari fee includes all camping and park fees, tented camping fee which includes breakfast and dinner in certain instances, flight over the Okavango Delta as well as the boat trip into the Okavango Delta.



Caprivi Safari, Namibia & Botswana

3 – 13 October 2012 (10 days) @ R10 650 per person sharing

The safari will start from Audi Camp in Maun. To understand the vastness of the Okavango Delta, we will do a fly-over of the area to get a bird's eye view of all the lagoons, lakes and waterways that make up the delta.

Heading North along the panhandle of the Delta towards the Caprivi, the vegetation is constantly changing. Crossing into Namibia, we will be staying on the banks of the main stream that feeds the Okavango Delta. This is Buffalo country and the Lions will not be far off!

Travelling along the Caprivi Strip, we will encounter the Kwando river system, the Maseba Swamp and various game reserves. The swamp and river areas offer great game viewing and an opportunity to go Tiger fishing.

After spending six nights in the Caprivi, it is time to travel back to Botswana. The Chobe, with the largest concentration of Elephants in the world, will be our base for the next two days.

Camping on the banks of the Chobe River will allow you to undertake a sunset cruise on the mighty Chobe where you can enjoy the magnificent wildlife and sunsets from the comfort of your deck chair.

If you have not yet caught a Tigerfish, this is your chance! The Chobe offers large herds of Buffalo, Zebra, Elephant, Kudu and Sable Antelope to mention but a few.

13 September 2011

Having all of these around, you will also find an abundance of predators in the area. The Caprivi Safari ends at Chobe.

If you are a nature lover and this has not turned you on for an epic African game viewing experience, nothing will!

This camping safari is suitable for all 4x4, 4x2 and soft-roader vehicles with off-road trailers and caravans.

The safari fee includes all camping and park fees, tented accommodation with breakfast and dinner, cost of Sunset cruise and Tiger fishing at Chobe.



Your host for all these safaris will be Jannie Rykaart (4WDGA member no: 3049), owner of Protea Eco-Adventures who is dedicated to well planned, authentic safari tours with just a few discerning explorers. Jannie will share his knowledge of the fauna and flora with you and assist where possible to make this an unforgettable safari experience. Our safari tours are kept small and intimate (only 10 vehicles or 20 people), contributing to an exclusive and warm atmosphere. All of these safari tours are subject to a minimum booking of 10 people.

Included in our fee are all the safari information (full itinerary of the safari, pack list, safari manners, maps, animal and birding list), Tour guide fees, Recovery and Border assistance, Convoy control, Camping/bedded tents fees, all Park fees, listed activity costs and assistance with your preparations for the safari. Costs excluded from our fee are camping equipment, food, beverages, water, fuel, border and road levies and any additional activity costs.

Once we have received your reservation form we will send you our pre-safari information pack containing essential information to ensure a smoother and more enhanced safari experience. To book your safari, send us an e-mail today to reserve your place at info@passport2adventure.co.za, visit our website for a visual experience at www.passport2adventure.co.za or contact Jannie on 083-268-0566.

***“You only live once, but if you do it right,
once is enough”***

Mae West

13 September 2011

Why use Protea for your next adventure into Africa?

- There are inherent risks and dangers involved when travelling across our borders alone and Inexperienced travellers will be met with unpleasant surprises.
- We travel in convoy at all times for safety, as it is easy to get lost or left behind when out on the road less travelled. We keep to convoy protocol.
- The guide will set a safe travelling pace with well-planned stops en route.
- We have visited the various destinations before and we know what to expect.
- All vehicles will be equipped with a long distance two-way radio.
- We know most of the travel conditions to these destinations, where to travel and where not to travel and how long it will take to travel safely between places.
- We take the greatest care in selecting overnight campsites with neat and clean ablutions blocks.
- We do not camp arbitrarily and unauthorized in the veld!
- We do not venture of demarcated roads and tracks - we only travel along regularly used roads and tracks to minimize our impact on the environment.
- Depending on conditions we generally do not break camp before 09h00 and always plan to reach our next destination by 17h00 at the latest.
- We will share whatever knowledge we have on the fauna and flora, the culture of the people and the destination with you. Those of you that can contribute more information feel free to do so!
- Our safari tours are planned months in advance, saving you the time and effort to do it yourself and offering you the peace of mind that everything is in place.
- Our campsites and reservations to the national parks are secured almost a year in advance, confirmed and paid for, thereby eliminating any nasty surprises.
- Our safari tours are economical and well-priced as a self-drive, self-catering adventure into Southern Africa.
- We host environmentally-friendly expeditions.
- Respect for our surroundings is key on all of our safari tours.
- We will supply you with a full itinerary and a pack list for each safari tour.
- We are always available to assist you in the planning of your safari with us.
- We do not contribute to noise pollution – Blaring radios, generators and unruly individuals are not welcome and will not be tolerated!
- We only accommodate 10 vehicles per safari tour with a minimum of 4 vehicles to secure it.
- We will meet 3 weeks prior to the selected safari tour at Outdoor Warehouse in Strubens Valley to discuss the safari, what to do, what to pack and to meet your fellow safari companions.
- All of these safari tours will be led by Jannie Rykaart personally.